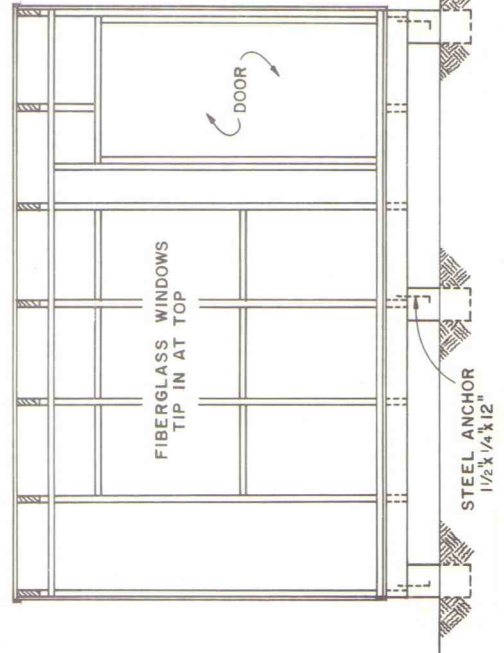
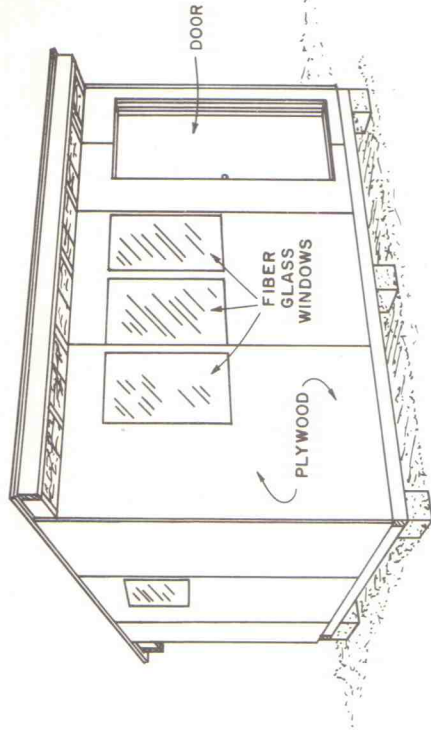


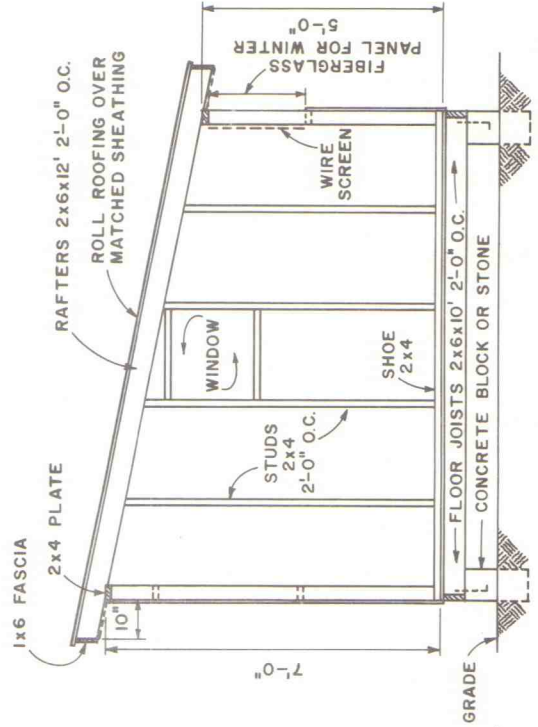
FLOOR PLAN



FRONT ELEVATION FRAMING



PERSPECTIVE



SIDE ELEVATION FRAMING

BILL OF MATERIALS

- FOUNDATION
 - 12 CONC. BLOCKS 8"x8"x16"
- FLOOR JOISTS
 - 7-PC. 2x6x10'
- FR. & REAR SILLS
 - 2-PC. 2x6x12'
- FLOOR
 - 150 BD. FT. T. & G.
- SHEATHING
 - 54 LIN. FT. 2x4
- SHOE
 - 9-PC. 2x4x5'
- STUDS: REAR
 - 9-PC. 2x4x7'
- FRONT
 - 8-PC. 2x4x12'
- ENDS
 - 2-PC. 2x4x12'
- PARTITIONS
 - 2-PC. 2x4x12'
- PLATES
 - 175 BD. FT. T. & G.
- ROOF
 - SHEATHING 1 1/2 SQS. ROLL
- SIDING & DOORS
 - 11 SHEETS 4'x8'x1/2" EXT. PLYWOOD
- WINDOWS
 - 2-PC. 2x10' FIBERGLASS (FLAT)
 - 4-PC. 2x4x12'
- MISCL. FRAMING
 - 7-PC. 2x6x12'
- NAILS & HARDWARE
 - 6-PC. 1 1/2"x1/4"x12"
- RAFTERS
 - 2-PC. 1x6x12'
- ANCHORS-STEEL
 - 2-PC. 1x2x12'
- FASCIA
 - 1-PC. 1x2x6'
- DOOR STOPS
 - 1-PC. 1x2x6'



NOTE:
CONSULT LOCAL HEALTH AND BUILDING CODE
AUTHORITIES BEFORE STARTING CONSTRUCTION

COOPERATIVE EXTENSION WORK IN
AGRICULTURE AND HOME ECONOMICS
STATE OF TENNESSEE
UNIVERSITY OF TENNESSEE
AGRICULTURAL ENGINEERING DEPARTMENT
AND
UNITED STATES DEPARTMENT OF AGRICULTURE COOPERATING

POULTRY HOUSE 10'x12'
N. H. '76 6248 SHEET 1 OF 1