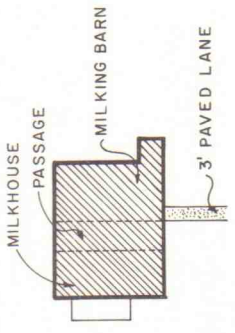
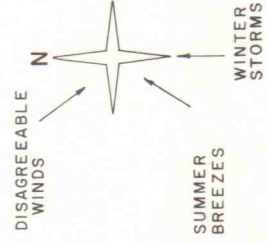


PERSPECTIVE

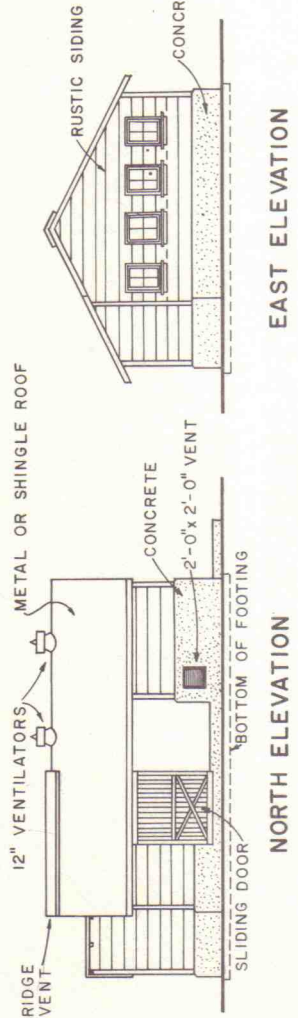
MILKHOUSE MUST BE AT LEAST 100 FEET FROM FEEDING BARN OR RACKS.



NOTE: THE MILKHOUSE SHALL BE LOCATED TO THE WINDWARD OF THE MILKING BARN, CORRALS, FEED SHEDS, ETC. CONSULT YOUR LOCAL INSPECTOR.

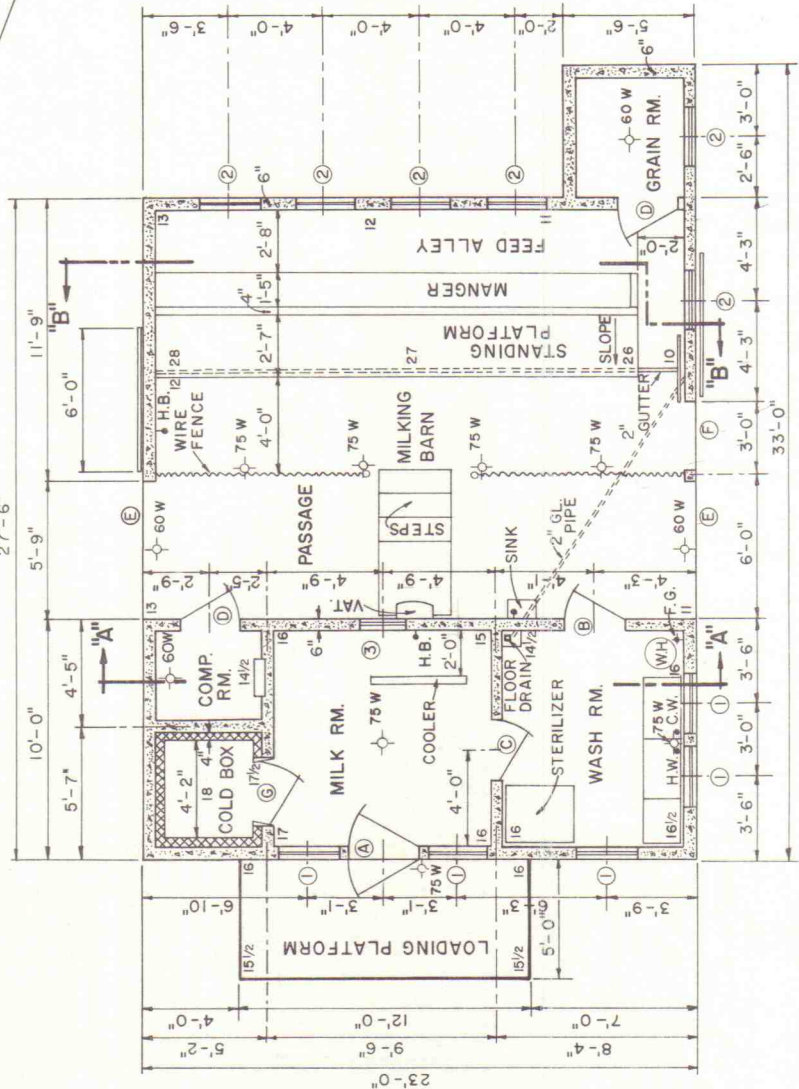


PLOT PLAN FOR WIND DIRECTIONS AS SHOWN



EAST ELEVATION

NORTH ELEVATION



FLOOR PLAN

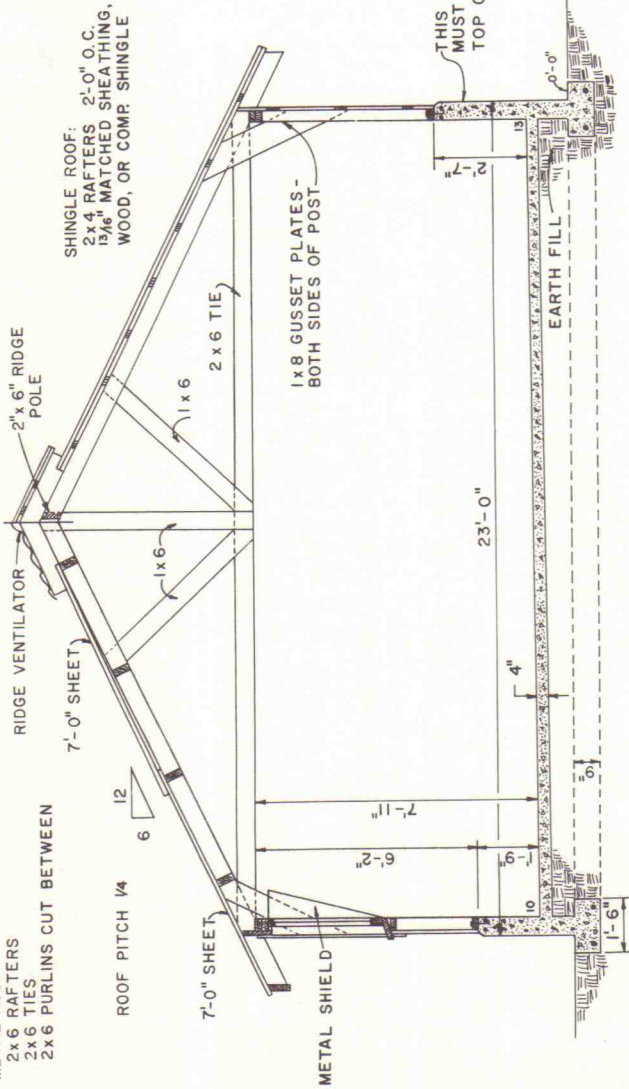
NOTE: CONSULT YOUR LOCAL HEALTH AND BUILDING CODE AUTHORITIES BEFORE STARTING CONSTRUCTION. CAPACITY: 10 GOATS

ELECTRICAL SYMBOLS	
	CEILING OUTLETS, WATTS NOTED
	BRACKET OUTLETS, WATTS NOTED
	CUTOUT CABINET & MAIN SERVICE SWITCH
NOTE: ALL LIGHTS TO BE CONTROLLED FROM PANEL BOARD	
GENERAL SYMBOLS	
	H.B. HOSE BIBBS, COLD WATER
	H.W. HOT WATER
	C.W. COLD WATER
	F.G. FUEL GAS

WINDOW SCHEDULE			
MARK	SIZE	TYPE	NO. REQ'D
1	2'-6" x 3'-0" x 1/2"	SASH, DROP-IN SCREENED	5
2	2'-6" x 3'-0" x 1/2"	SASH, DROP-IN	6
3	2'-0" x 2'-0"	SPECIAL	1
NOTE: ALL 2'-6" x 3'-0" SASH TO BE 4 LIGHT.			

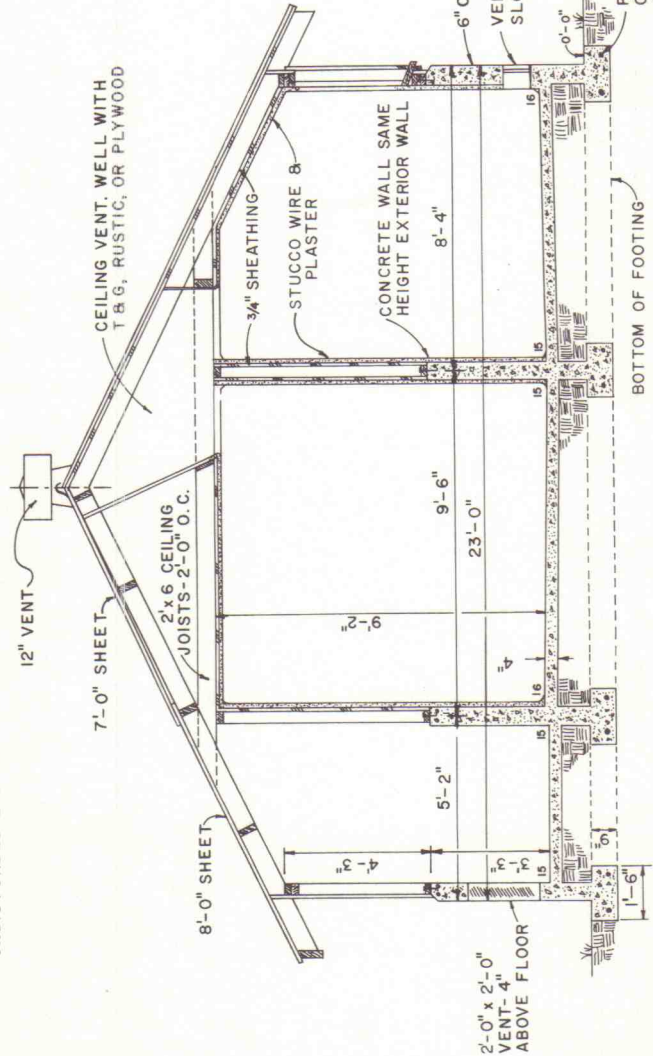
DOOR SCHEDULE			
MARK	SIZE	TYPE	NO. REQ'D
A	3'-0" x 7'-0" x 1/2"	GLASS & PANEL - SCREENED	1
B	2'-6" x 6'-8" x 1/2"	SCREEN & PANEL	1
C	2'-6" x 6'-8" x 1/2"	SCREEN OR SCREEN & PANEL	2
D	2'-6" x 6'-8" x 1/2"	PANEL	2
E	6'-0" x 6'-8" x 1/4"	RUSTIC PANELS - ROLLING	1
F	2'-9" x 6'-8" x 1/2"	RUSTIC PANELS - ROLLING	1
G	2'-9" x 6'-8" x 1/2"	SPECIAL - REFRIGERATOR	1

METAL ROOF:
 2 x 6 RAFTERS
 2 x 6 TIES
 2 x 6 PURLINS CUT BETWEEN



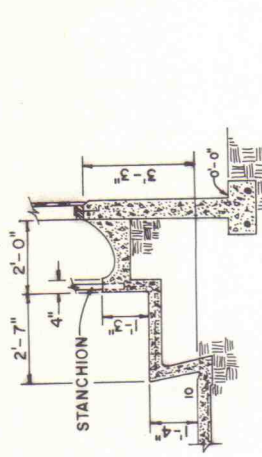
SECTION B-B

NOTE: CARRY FOOTINGS BELOW FROST LINE TO REST ON UNDISTURBED EARTH.

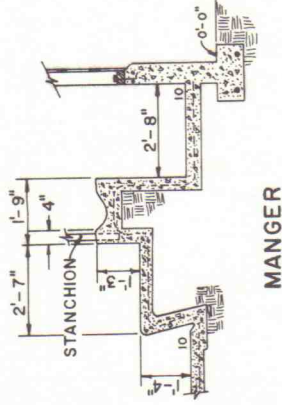


SECTION A-A

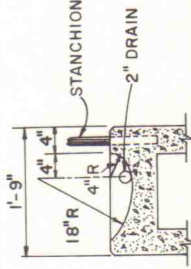
NOTE:
 CONCRETE WALL MAY BE RAISED A FEW INCHES SO AS TO ELIMINATE THE STUDS UNDER THE WINDOWS. WHEN THIS STYLE MANGER IS USED, TOTAL LENGTH OF BARN IS DECREASED FROM 27'-6" TO 25'-1".



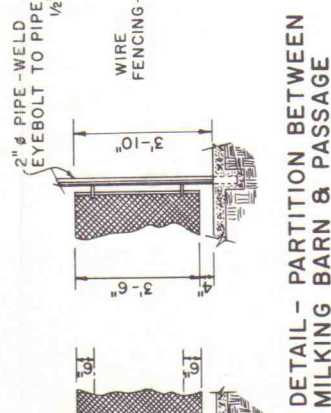
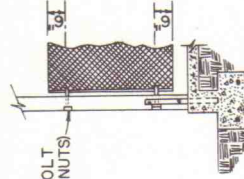
ALTERNATE MANGER



MANGER



MANGER DETAIL



DETAIL - PARTITION BETWEEN MILKING BARN & PASSAGE

10" EYEBOLT (RECESS NUTS)
 2" PIPE-WELD EYEBOLT TO PIPE
 WIRE FENCING
 6" CONC. WALL
 VENTS-3" TO 6" FROM FLOOR SLOPE TO INSIDE
 PLACE 2-1/2" Ø RODS CONTINUOUSLY IN BOTTOM OF FOOTINGS.

