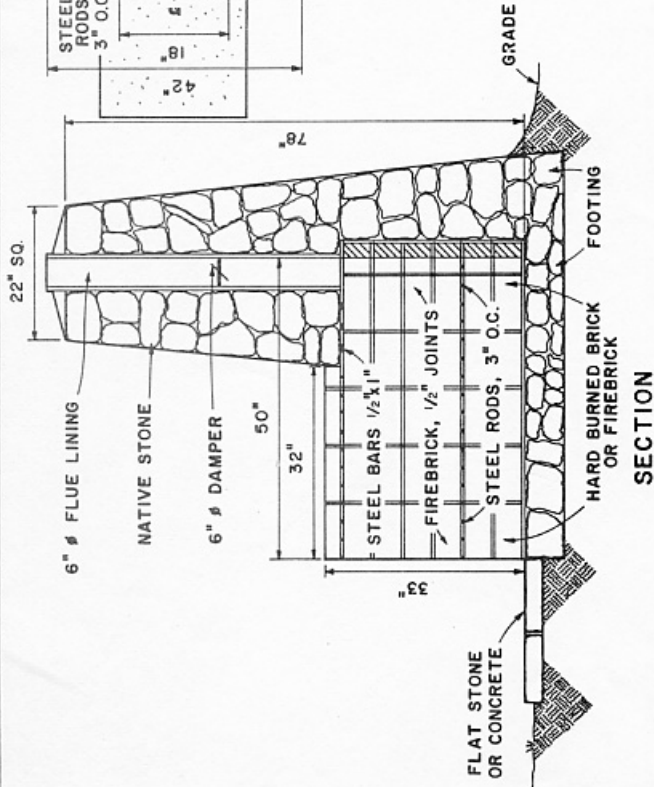


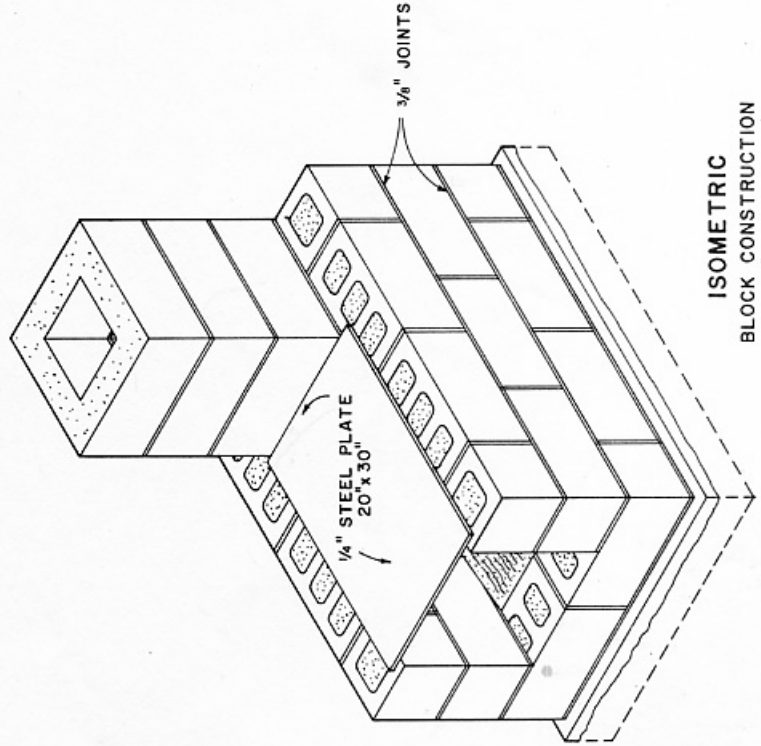
PLAN

BILL OF MATERIALS

- STONE CONSTRUCTION**
- 50 CU. FT. NATIVE STONE
 - MORTAR: 1:3 MIX
 - 5 BAGS CEMENT
 - 11 CU. FT. SAND
 - 98 FIREBRICK $\frac{1}{2} \times \frac{1}{2} \times 22"$
 - 3 STEEL BARS $\frac{1}{2}" \phi \times 22"$
 - 28 STEEL RODS $\frac{1}{2}" \phi \times 22"$
 - 1 FLUE LINING OR TILE $6" \phi \times 50"$
 - 1 DAMPER $6" \phi$

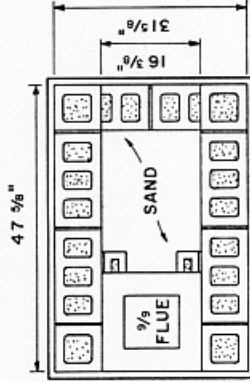


SECTION

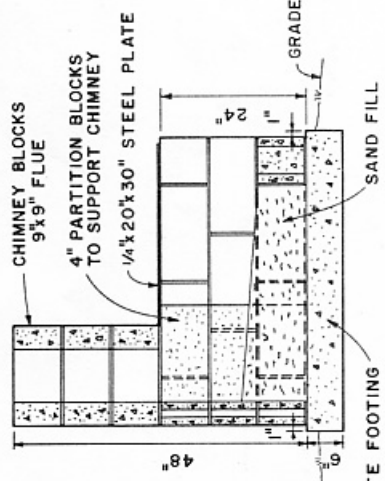


ISOMETRIC
BLOCK CONSTRUCTION

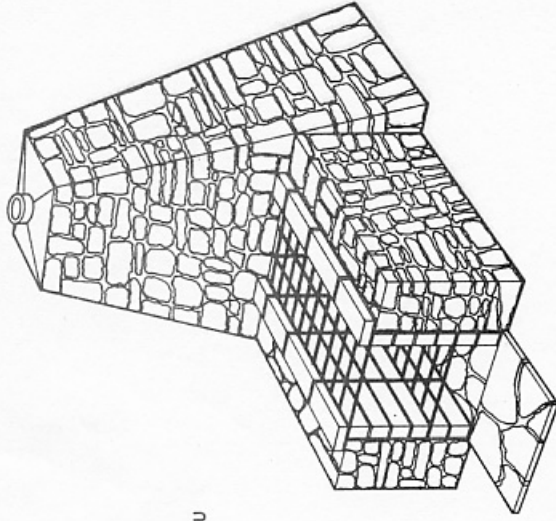
12" 6" 0 1'



PLAN
STEEL PLATE NOT SHOWN



SECTION
CONCRETE FOOTING



PERSPECTIVE

BILL OF MATERIALS

- CONCRETE BLOCK CONSTRUCTION**
- 16 REGULAR BLOCKS $8 \times 8 \times 16"$
 - 6 HALF BLOCKS $8 \times 8 \times 8"$
 - 9 PARTITION BLOCKS $4 \times 8 \times 16"$
 - 3 CHIMNEY BLOCKS ($9 \times 9"$ OPENING $17 \times 8 \times 17"$)
 - 1 STEEL PLATE $\frac{1}{4} \times 20 \times 30"$
 - MORTAR:
 - 1 96 LB. SACK PORTLAND CEMENT
 - 1 100 LB. HYDRATED LIME
 - 300 LB. MASON SAND
 - 2 CONCRETE BASE:
 - 1 96 LB. SACKS OF PORTLAND CEMENT
 - 1 400 LB. SAND
 - 1 500 LB. GRAVEL OR STONE

BASED ON: OREGON, VIRGINIA AND NATIONAL
PARK SERVICE PLANS.

12" 6" 0 1'

