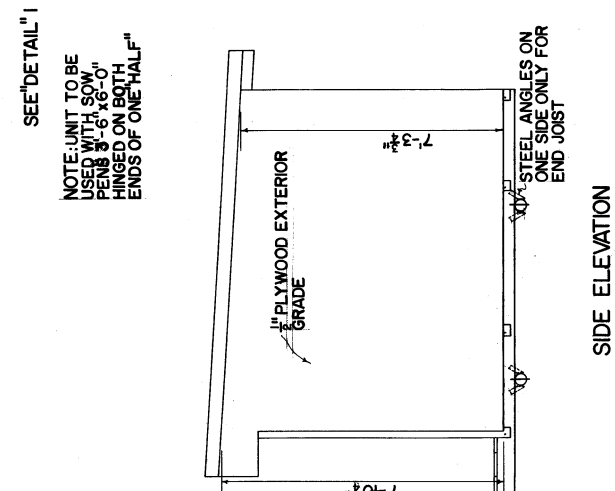
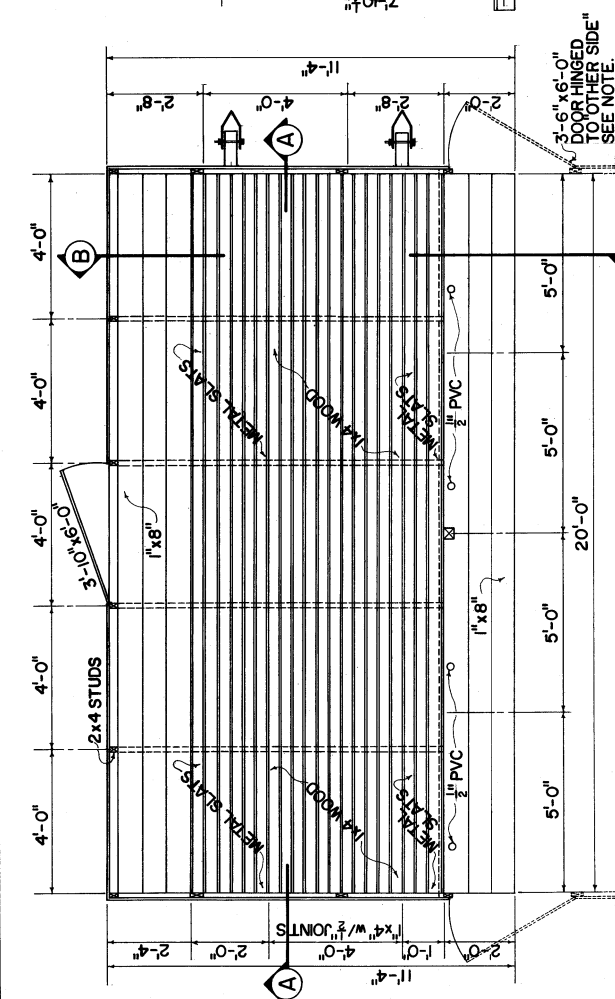


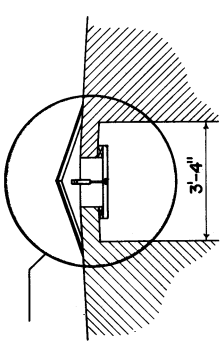
NOTE: UNIT TO BE USED WITH SOW PENS 3'-6" x 6'-0" HINGED ON BOTH ENDS OF ONE HALF"



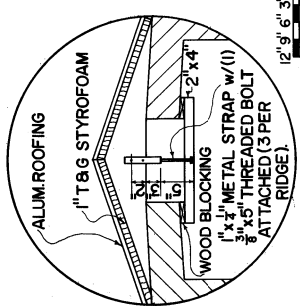
SIDE ELEVATION



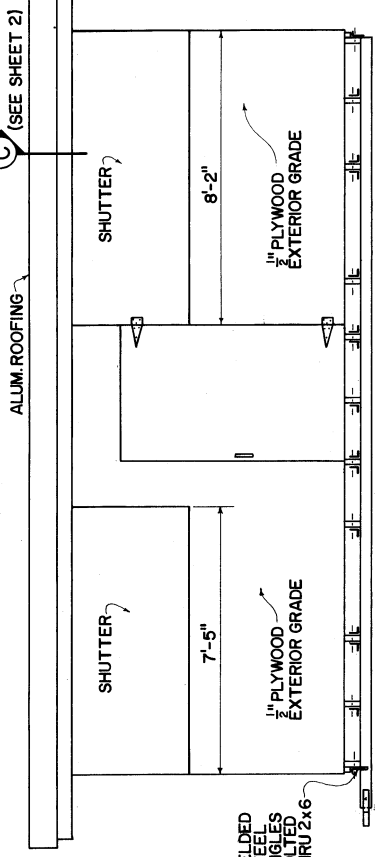
FLOOR PLAN



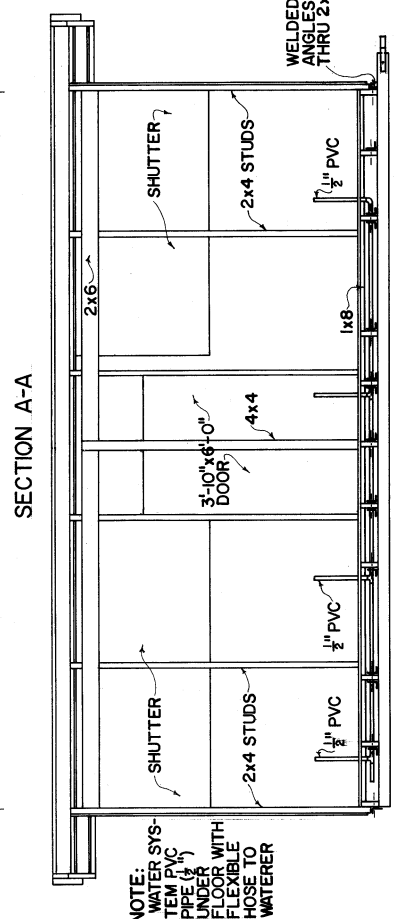
BUILDING CONNECTION



DETAIL I



REAR ELEVATION



FRONT ELEVATION

NOTE: WATER SYSTEM PVC UNDER FLOOR WITH FLEXIBLE HOSE TO WATERER

SCALE 1/2" = 6'-0" 1" = 12'-0" 2" = 24'-0" 4" = 48'-0"

UNLESS OTHERWISE NOTED

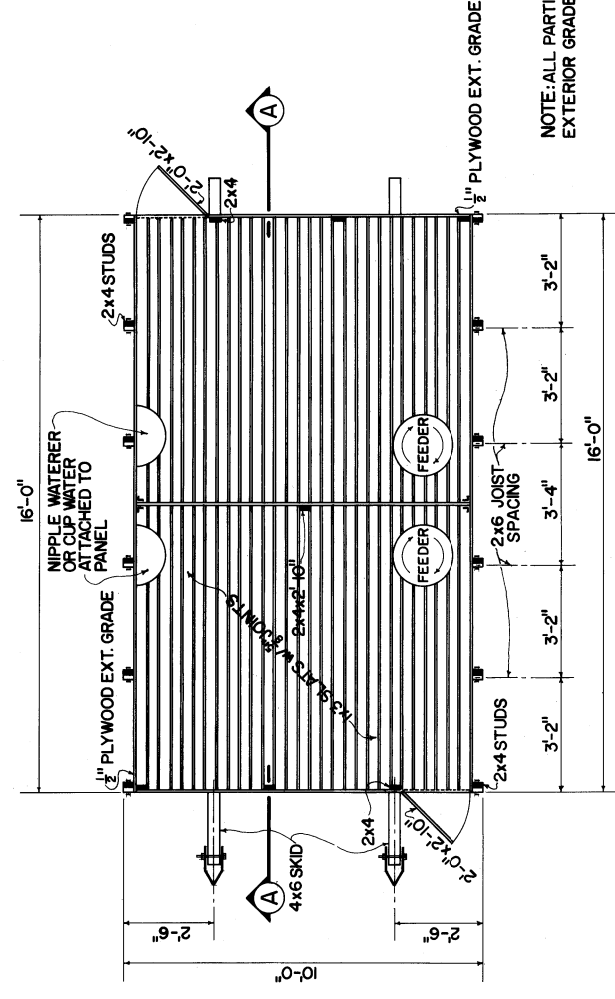
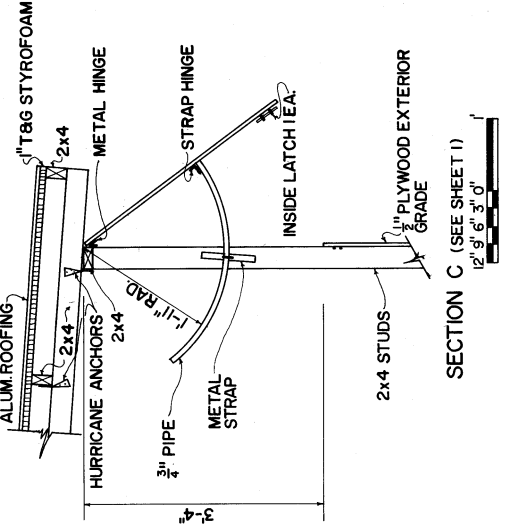
COOPERATIVE EXTENSION WORK IN AGRICULTURE AND HOME ECONOMICS
STATE OF TENNESSEE
UNIVERSITY OF TENNESSEE
AND
UNITED STATES DEPARTMENT OF AGRICULTURE COOPERATING

FARROWING & FEEDER PIG UNIT

FLA. '77 6290 SHEET 1 OF 2

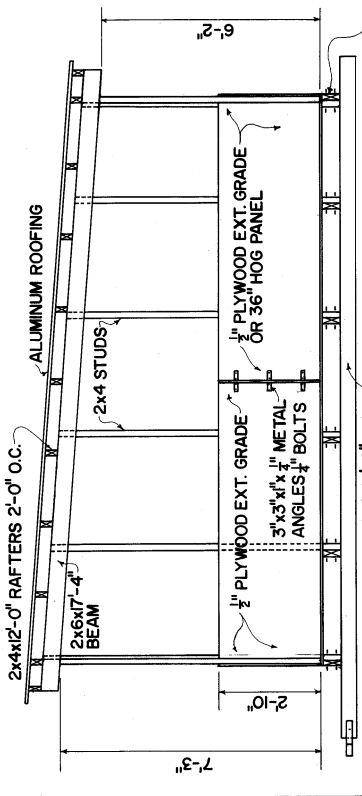
SECTION B-B

BASED ON: UNIVERSITY OF FLORIDA PLAN NO. FL 558

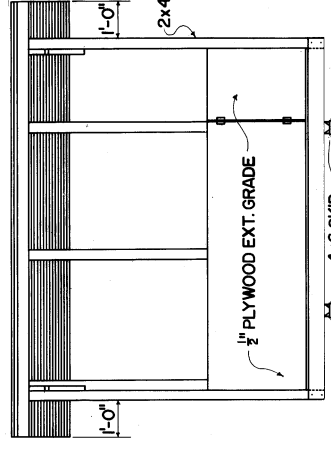


NOTE: ALL PARTITIONS & PANELS SHOWN AS 1/2\"/>

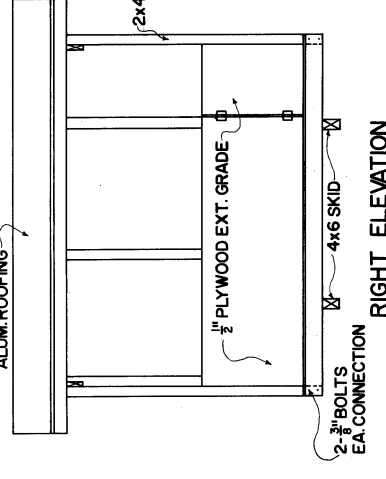
FLOOR PLAN



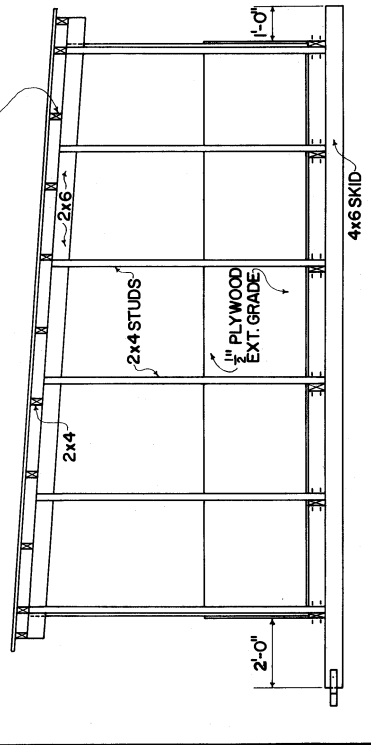
SECTION A-A



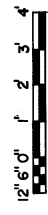
LEFT ELEVATION



RIGHT ELEVATION



FRONT ELEVATION



UNLESS OTHERWISE NOTED
 COOPERATIVE EXTENSION WORK IN
 AGRICULTURE AND HOME ECONOMICS
 STATE OF TENNESSEE
 UNIVERSITY OF TENNESSEE
 UNITED STATES DEPARTMENT OF AGRICULTURE COOPERATING

FARROWING & FEEDER PIG UNIT
 FLA. '77 6290 SHEET 2 OF 2