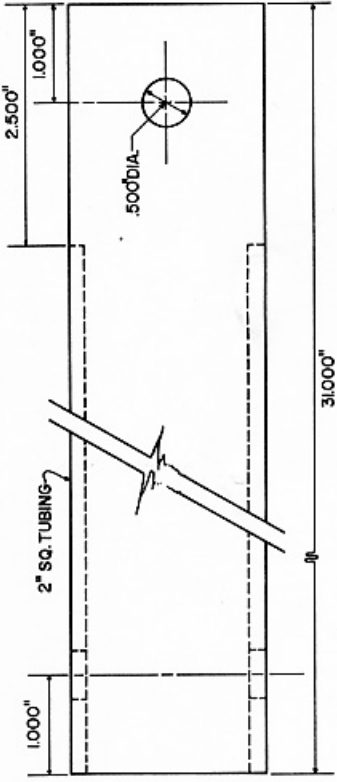
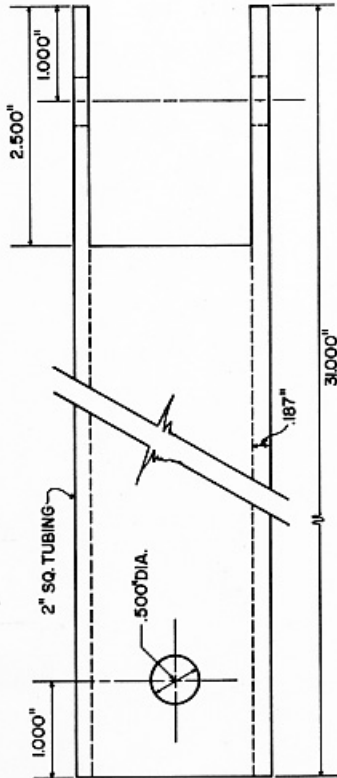


BASED ON UNIV. OF FLA. PLAN NO. 1081  
 COOPERATIVE EXTENSION WORK IN  
 AGRICULTURE AND HOME ECONOMICS  
 STATE OF TENNESSEE  
 UNIVERSITY OF TENNESSEE  
 AGRICULTURAL ENGINEERING DEPARTMENT  
 AND  
 UNITED STATES DEPARTMENT OF AGRICULTURE COOPERATING

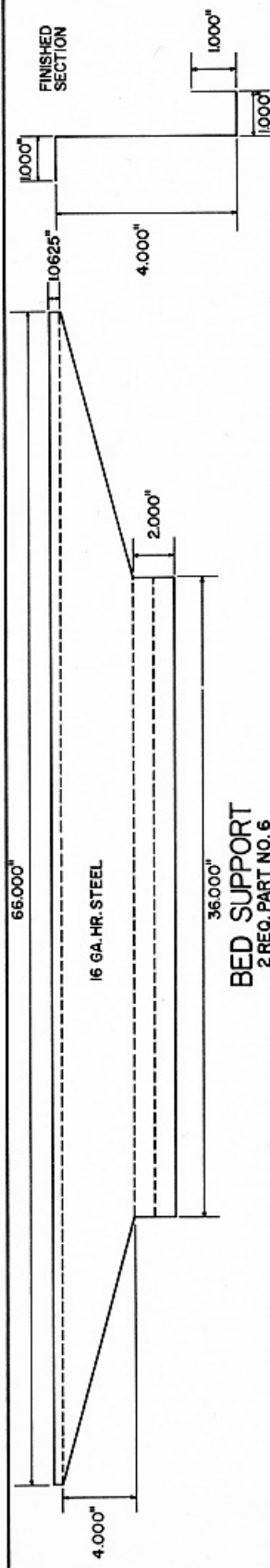
**NURSERY WAGON**  
**FOUR WHEEL STEER**

FLA. '78 6293 SHEET 1 OF 5

**HANDLE**  
1 REQ. PART NO. 25  
NOT TO SCALE



1) CUT OUT TWO PIECES FROM 16 GA. HR. STEEL.  
2) BEND ON BROKEN LINES TO SECTION SHOWN.

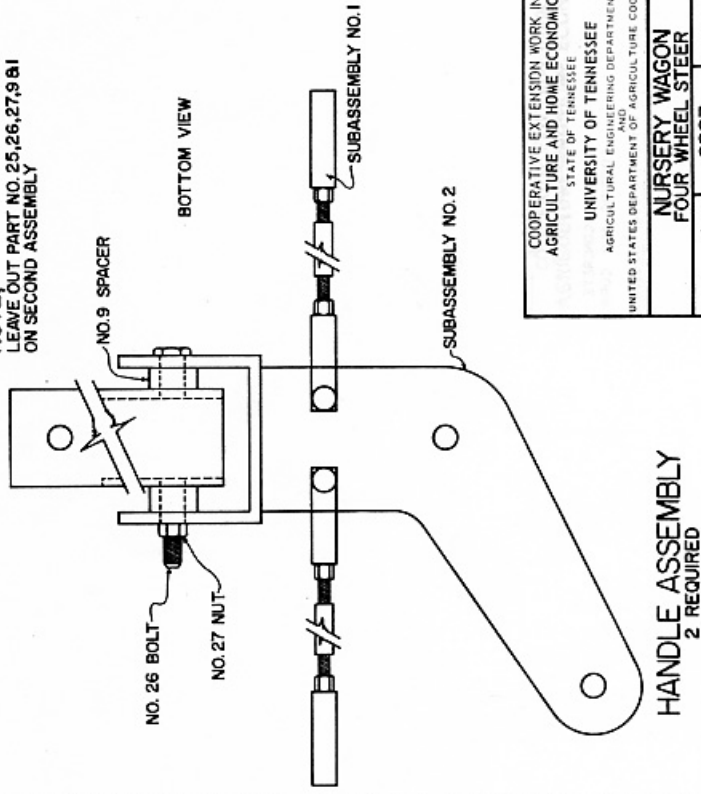


**BED SUPPORT**  
2 REQ. PART NO. 6

**PARTS LIST**

PART NUMBER	DESCRIPTION	NUMBER REQUIRED	P-PURCHASE M-MAKE
*1	TONGUE MOUNTING "U" PLATE	1	M
*2	WHEEL SHAFT	4	M
*3	DOG LEG PLATE	2	M
*4	STEERING ARM LEVER	4	M
*5	BED SUPPORT STIFFENER	2	M
*6	BED SUPPORT	2	M
*7	STEERING ROD	1	M
*8	TIE ROD	4	M
*9	SPACER	4	M
*10	SMALL BUSHING	4	M
*11	SLEEVE	4	M
*12	AXLE	2	M
*13	PIVOT ROD	4	M
*14	AXLE REINFORCER	4	M
*15	LARGE BUSHING	4	M
*16	TIE ROD END (INT. HARVESTER NO. 529 430-RI OR EQUAL)	10	P
*17	1/2" x 1/2" N.F. 20 NUT	10	P
*18	1/2" x 1/2" N.F. 20 BOLT WITH HEAD REMOVED	10	P 8M
*19	1/2" T.I.N.C. CASTLE NUT	4	P
*20	4.00 x 8 WHEEL AND TIRE WITH SELF LUBRICATING BEARINGS; 3/8" BORE ON OUTSIDE BEARING, 1" BORE ON INSIDE	4	P 8M
*21	WASHER	4	M
*22	3/8" x 1" I.G.N.C. CAP SCREW	4	P
*23	1/2" I.I.N.C. CASTLE NUT	2	P
*24	WASHER-3/8" INSIDE BORE, 1" O.D., 1/8" THICK	4	P
*25	HANDLE	1	M
*26	1/2" x 4" N.F. 20 BOLT	1	P
*27	1/2" N.F. 20 NUT	1	P
*28	WASHER	4	M

NOTE:  
LEAVE OUT PART NO. 25, 26, 27, 9 & 1  
ON SECOND ASSEMBLY



**HANDLE ASSEMBLY**  
2 REQUIRED

COOPERATIVE EXTENSION WORK IN  
AGRICULTURE AND HOME ECONOMICS  
STATE OF TENNESSEE  
UNIVERSITY OF TENNESSEE  
AGRICULTURAL ENGINEERING DEPARTMENT  
AND  
UNITED STATES DEPARTMENT OF AGRICULTURE COOPERATING

**NURSERY WAGON**  
**FOUR WHEEL STEER**

FLA. '78 6293

SHEET 2 OF 5

