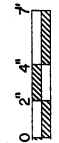


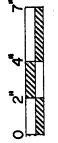
PT. NO.	MATERIAL	QUAN.
1	1 1/2" x 1 1/2" x 26 1/2" SQ. STEEL TUBING	1
2	1 1/2" x 1 1/2" x 30" SQ. STEEL TUBING	1
3	1 1/2" x 1 1/2" x 21" L-STEEL	4
4	1/2" x 1 1/2" x 5" STRAP STEEL	2
5	1/2" x 1 1/2" x 23" STRAP STEEL	2
6	1/2" x 1 1/2" x 5" STRAP STEEL	4
7	3/16" x 1 1/2" x 1 1/2" STRAP STEEL	12
8	1/2" x 2" x 2" STRAP STEEL	2
9	1/2" x 2" x 5 1/4" STRAP STEEL	2
10	1/2" x 2" x 3 1/4" STRAP STEEL	2
11	1 1/2" PIPE - 4" LONG	3
12	1 1/2" PIPE - 2 1/2" LONG	2
13	1" PIPE - 60" LONG	1
14	1/2" x 1 1/2" x 6" STRAP STEEL	2
15	1/2" x 1 1/2" x 6 1/2" STRAP STEEL	2
16	1/2" x 1 1/2" x 16" x 30" SQ. STEEL TUBING	1
17	1/2" x 1 1/2" x 6 5/8" STRAP STEEL	1
18	1/2" x 1 1/2" x 2 3/4" STRAP STEEL	2
19	1/2" x 2 1/2" x 2 1/2" STEEL PLATE	2
20	1/2" x 1 1/2" x 11" STRAP STEEL	1
21	1 1/2" DIA. x 3" LG. COLD ROLLED - DRILL FOR 3/4" DIA. COLD ROLLED STEEL	2

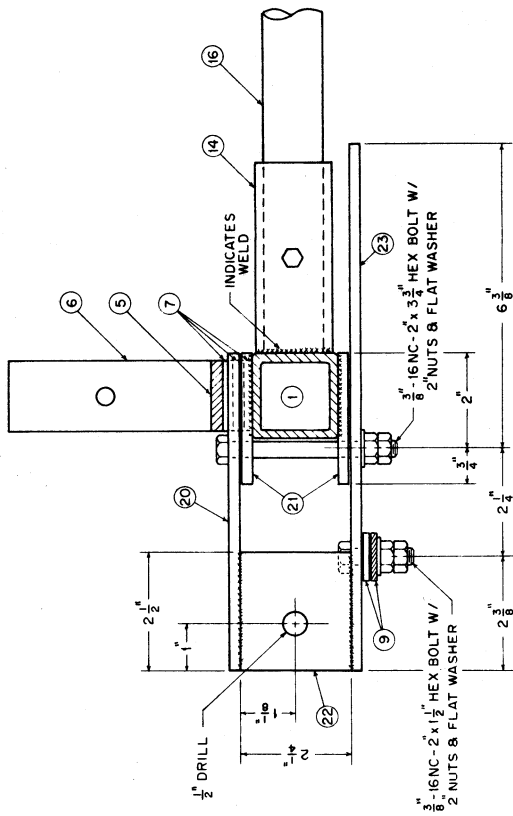
NOTE:
PARTS WITH ANGLE CUTS ARE TORCH CUT TO FIT

TOP VIEW

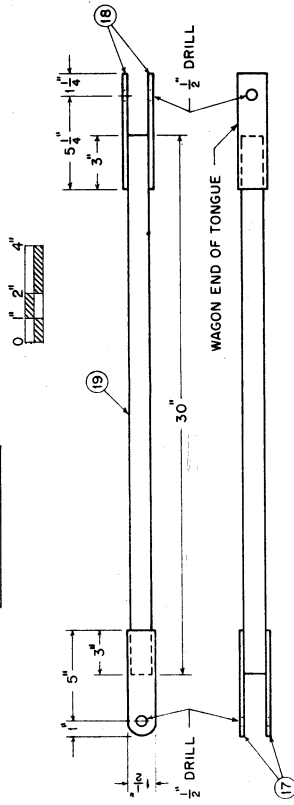


SIDE VIEW

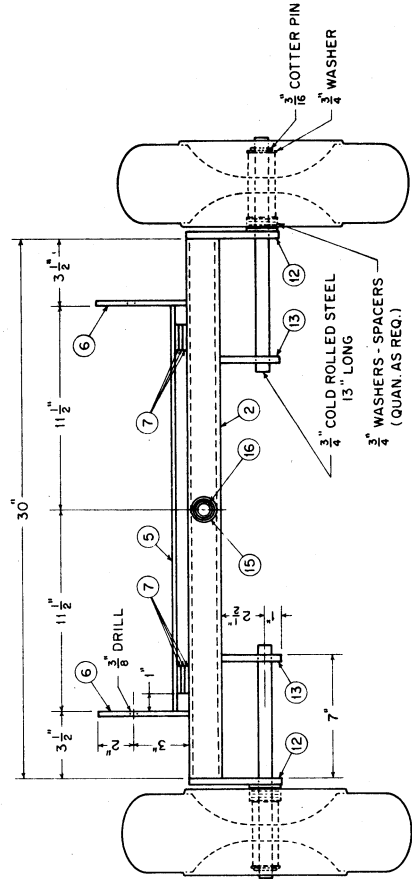




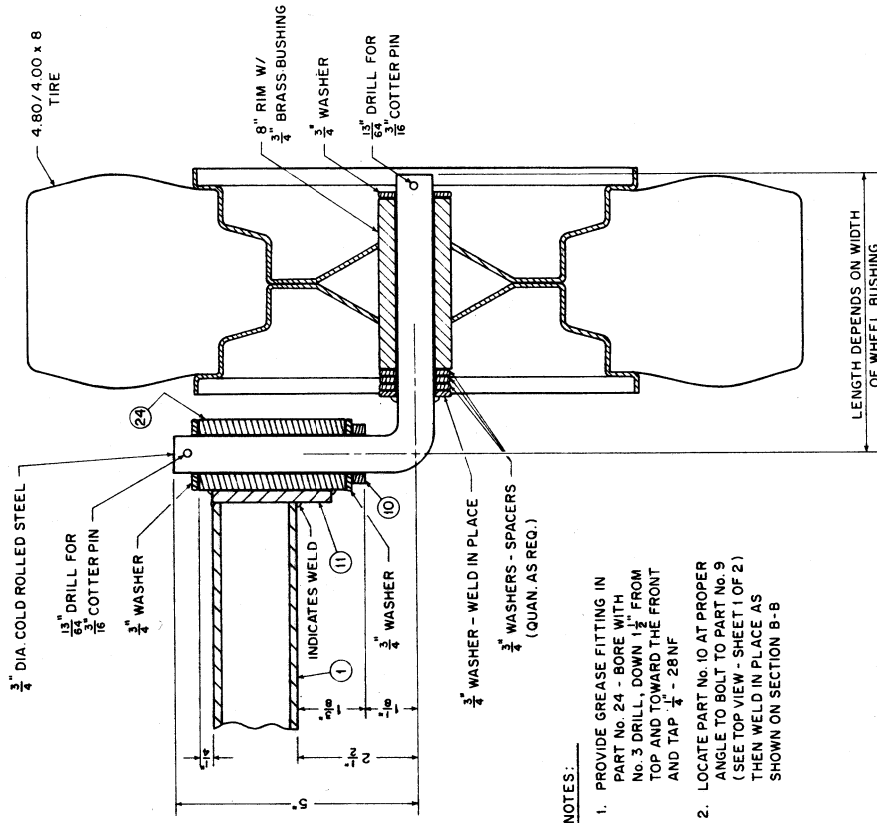
SECTION A - A



TONGUE DETAILS



REAR VIEW



SECTION B - B

NOTES:

1. PROVIDE GREASE FITTING IN PART No. 24 - BORE WITH No. 3 DRILL, DOWN 1 1/2" FROM TOP AND FORWARD THE FRONT AND TAP 1/4" - 28NF
2. LOCATE PART No. 10 AT PROPER ANGLE TO BOLT TO PART No. 9 (SEE TOP VIEW - SHEET 1 OF 2) THEN WELD IN PLACE AS SHOWN ON SECTION B-B