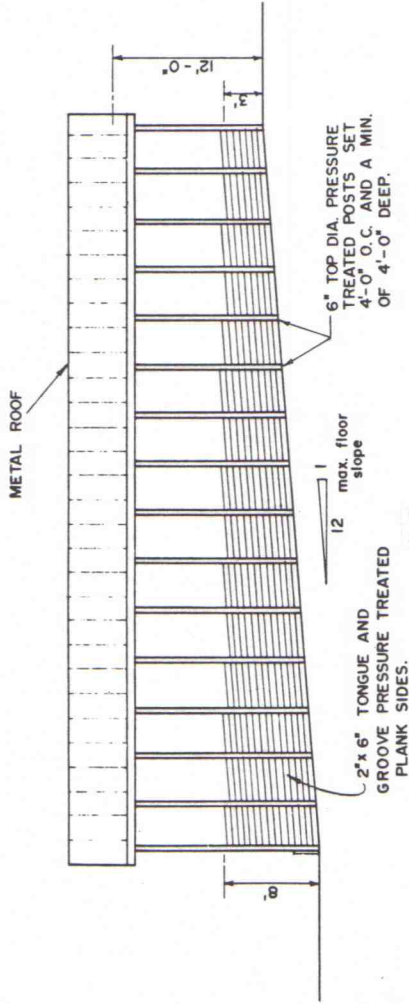
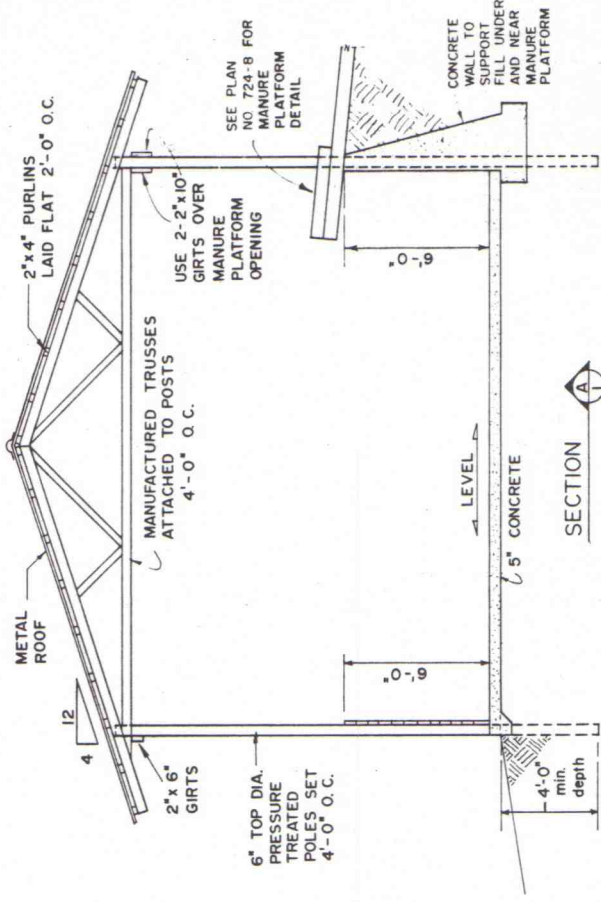


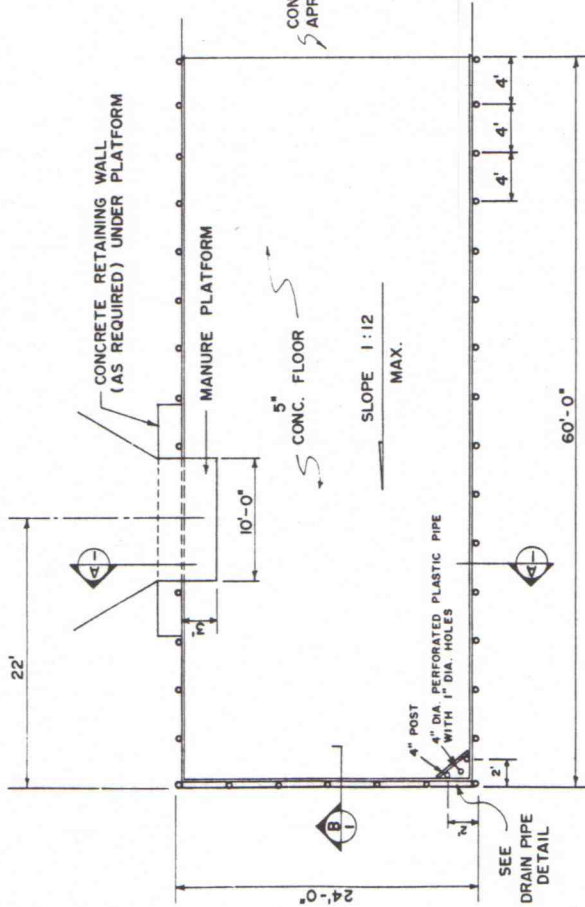
THIS PLAN PROVIDES APPROXIMATELY 60 DAYS STORAGE FOR 60 COWS IN TOTAL CONFINEMENT.



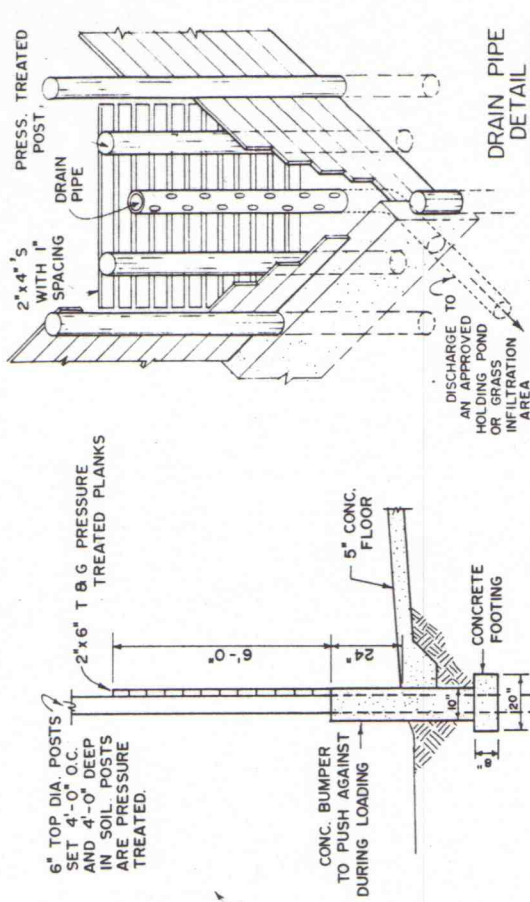
SIDE VIEW



SECTION A



PLAN



SECTION B

NOTE :

SECURE PROPER REGULATORY APPROVAL BEFORE STARTING CONSTRUCTION. LOCAL SOIL CONDITIONS, SITE SLOPE, AND BUILDING CONFIGURATION MAY REQUIRE SOME MODIFICATION OF THIS PLAN. ALL LIQUID OVERFLOW MAY ONLY BE DISCHARGED TO AN APPROVED HOLDING POND OR GRASS INFILTRATION AREA.

PLAN IS FOR ILLUSTRATIVE PURPOSES ONLY.

COOPERATIVE EXTENSION WORK IN AGRICULTURE AND HOME ECONOMICS
 STATE OF TENNESSEE
 UNIVERSITY OF TENNESSEE
 AGRICULTURAL ENGINEERING DEPARTMENT
 UNITED STATES DEPARTMENT OF AGRICULTURE COOPERATING

COVERED DRY STACK MANURE STORAGE

TENN. JULY 1977 SHEET I OF I
 GFG / PWE PLAN NO. T 4029