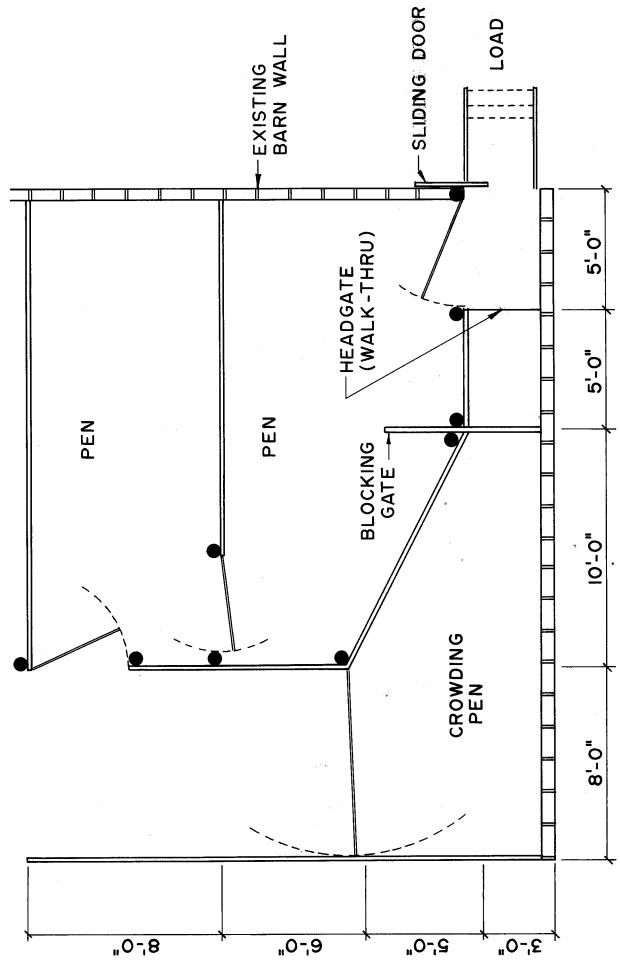


IN THE CORNER OF A FIELD



IN THE CORNER OF A BARN

CONSTRUCTION NOTES & SPECIFICATIONS

- HOLDING PENS:**  
 20 SQ. FT. PER MATURE ANIMAL  
 TWO (OR MORE) PENS  
 WATER (IF CATTLE ARE HELD OVERNIGHT)
- CROWDING PEN:**  
 150 SQ. FT. (ONE TRUCKLOAD)
- WORKING CHUTE:**  
 18 TO 30 FT. LONG  
 22" TO 26" WIDE  
 BLOCKING GATES TO SPEED HANDLING & PREVENT CROWDING AT HEADGATE OR SCALES

- ADDITIONAL FEATURES:**  
 PORTABLE SCALES  
 SPRAY PEN  
 CUTTING GATES FOR SORTING  
 SQUEEZE  
 WALKING PLATFORM ON ONE OR BOTH SIDES OF THE CHUTE

COOPERATIVE EXTENSION WORK IN AGRICULTURE AND HOME ECONOMICS  
 STATE OF TENNESSEE  
 UNIVERSITY OF TENNESSEE  
 AGRICULTURAL ENGINEERING DEPARTMENT  
 UNITED STATES DEPARTMENT OF AGRICULTURE COOPERATING